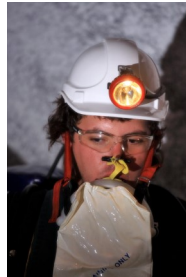


## We are fortunate to have safety legislation

Carrying a self-rescuer so as to not breathe poisonous gasses in the event of a mine fire or explosion was made compulsory in Queensland in July 1978.



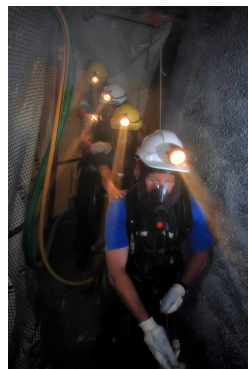
Current legislation requires refresher training to be conducted on a regular basis. The basic training is meant to simulate a worst case scenario in the unlikely event of a mishap underground. Conducting this training for new entrants to the underground mining industry is extremely challenging.



Lennon Training take safety training for new entrants to the underground very seriously. They have constructed underground galleries at their three training centres in Emerald, Moranbah and Brisbane. Each gallery is

fitted with the latest in breathing apparatus, smoke generators to simulate reduced visibility, and breathing apparatus recharging stations identical to those used at the major mines.

It is good to have legislation to protect our health and safety, but that legislation is not worth much if the training to achieve compliance is not taken seriously.



*It is a long and winding road to a safe industry.  
And staying safe is not the easiest road to travel.*

## Moranbah

First time programs & 5-year refresher for

- ⇒ Std11 Surface and Underground
- ⇒ Supervisor (S123)
- ⇒ Cert IV Risk (G2)

Book online or give us a call for dates.

## Brisbane

Situated just 4 klm from the Domestic Airport, you can get the following training done with us

First time programs and 5-year refresher for

- ⇒ Supervisor
- ⇒ Cert IV Risk (G2)
- ⇒ Std11 Surface
- ⇒ Std11 Underground

The schedule is available for above programs at our Eagle Farm campus. Book online or give us a call & we'll email you the details.

## Head office contact details

Phone: (07) 4982 0188  
 Email: admin@lennontraining.com  
 Street: 11 Kyle St, Emerald, 4720  
 Postal: PO Box 1470, Emerald, 4720

**January**  
**February**  
**March**  
**2022**

## Course dates & price list

## Primary training centre 11 Kyle St, EMERALD

With selected programs also available in:

**BRISBANE and MORANBAH**

## Online reservations available

[www.lennontraining.com](http://www.lennontraining.com)

Phone: (07) 4982 0188  
 admin@lennontraining.com  
 Payment details required

## RII40420 program overview

as part of becoming a QLD Coal ERZ Controller ^

^ Terms & conditions apply

The Certificate IV in Underground Coal Operations is one of the pre-requisites in applying to the Board of Examiners to sit the Deputies Oral. It aims to develop the knowledge and skills of those individuals who intend on becoming an Underground Deputy (ERZ Controller) and ensure Statutory obligations are met in the workplace.

This qualification complies with the Australian Qualifications Framework (AQF) and therefore, a nationally recognised statement of attainment will be issued on successful completion.

**Vocational outcome:** ERZ Controller, pending Board of Examiner written and oral assessments, site specific inductions and respective authorisations

**Pre-requisites: (1)** two years experience in underground coal within the past five years. This is a requirement as the availability of facilitators and content people are limited and as such we are unable to offer basic education in the principles of coal mining; **(2)** personal study time 12-18 hours per week; **(3)** access to underground coal mine essential for assignments; **(4)** access to a copy of your sites' Safety and Health Management system and Principal Hazard Management Plans; **(5)** physical ability to complete the practical assignments

Note:- People with less than two years' experience underground may present their case for being permitted to enroll in a Unit. The acceptance of such an application will be based on an assessment of the person being able to cope with the level of instruction.

**For the Board of Examiner application you will be required to complete the following unit through your own means:**

RIIMGT401 Show leadership in the workplace

RIIRIS402E Carry out the risk management processes

**To be eligible for the full certificate qualification, you will be required to complete the following competencies through your own means:** Two electives: typically an equipment unit such as Shuttlecar and typically RIWHS301E or RIICOM301E from your Supervisor course.

Elective units must reflect current occupational and learning outcomes of this AQF qualification

## RII40220 program overview

as part of becoming a QLD Coal Open Cut Examiner ^

^ Terms & conditions apply

**The program we offer is on an 'assessment only' basis.**

The aim of the qualification RII40220 - Certificate IV in Surface Coal Mining (Open Cut Examiner) is to develop the knowledge and skills in an applicant that is required by an open cut examiner.

As this program of study meets the Australian Qualification Framework (AQF), a nationally recognised qualification will be issued.

**Vocational outcome:** The qualification RII40220 - Certificate IV in Surface Coal Mining (Open Cut Examiner), together with the appropriate experience, allows a candidate to sit the oral assessment conducted by the Board of Examiners. Once passed by the Board the candidate will be issued with an Open Cut Examiners Certificate of Competency.

**Pre-requisites to apply for enrolment with Lennon Training:**

**(1)** five years work experience at an open cut mine. Three of these years need to be in and about the excavation ('the cut'); **(2)** personal study time 12-18 hours per week; **(3)** access to an open cut coal mine; **(4)** you will need to have 'tickets' for three pieces of equipment preferably assessed to the national RII competencies. If you do not currently hold these tickets, you will need to be in a position to get them by the time you complete the study program.

**For more information refer to the pre-enrolment student information guide which will have details on the competencies available, fees involved and enrolment application.**



## RII50920 program overview

as part of becoming a QLD Undermanager ^

^ Terms & conditions apply

Lennon Training offer the **Diploma of Underground Coal Mining Management**, a prerequisite of the Board of Examiners before being able to apply to the Board to sit the examination for a second class mine managers certificate of competency (undermanagers certificate of competency).

The Diploma requires you to attain twelve (12) Units. Ten of the twelve Units are being offered by Lennon Training. The remaining two Units (risk and one of the supervisors Units) are expected to be already held by the student.

The questions are designed around the assumption that you are an experienced deputy or an experienced supervisor performing duties similar to those assigned to an undermanager. The questions focus on the role of a shift undermanager.

Note: - Requirements for the Diploma current as of 07/12/20

This qualification complies with the Australian Qualifications Framework (AQF) and therefore, a nationally recognised statement of attainment will be issued on successful completion.

**Vocational outcome:** Second class mine manager, pending Board of Examiner written and oral assessments, site specific inductions and respective authorisations

**Pre-requisites:**

Due to the level of mining knowledge assumed when designing this program, you are required to have a number of years' experience in supervisory or management roles (eg an ERZ controller, underground coal supervisor or engineer with underground coal experience) to enroll in Units offered by this program. This to ensure fairness to the applying candidates.

You are required to have access to a working underground coal mine and access to the documentation that would normally be available to an ERZ controller or supervisor engaged at an underground coal mine.



January		Sa	Su	M	Tu	W	Th	F	Sa	Su	M	Tu	W	Th	F	Sa	Su	M	Tu	W	Th	F	Sa	Su	M	Tu	W	Th	F	Sa	Su	M	Tu	W	Th	F	Sa	Su	M		
<b>Venue Codes:</b> EMD = EMERALD / MBH = MORANBAH / BNE = BRISBANE		1	2	3	4	5	6	7	8	9	10	11	12	13	14	15	16	17	18	19	20	21	22	23	24	25	26	27	28	29	30	31									
Surface Coal to meet Std11 2 days 6 Std11 This is for first timers	\$753			Public Holiday									EMD .	EMD .					.	EMD .	EMD .					MBH .	MBH .	Public Holiday													
Surface & Underground Coal to meet Std11 3 days 7 Std11 This is for first timers	\$1,218.50			Public Holiday															.	EMD .	EMD .	EMD .					Public Holiday														
Underground Coal (add on) 1 day RIERR203E only You must have current SoA for Surface Std11	\$475.50			Public Holiday															.	EMD .							Public Holiday														
Surface Coal to meet Std11 REFRESHER 1/2 day 6 Std11 At booking, supply details of current experience	\$344.50			Public Holiday																							Public Holiday	EMD .													
Surface & UG Coal to meet Std11 REFRESHER 1 day 7 Std11 At booking, supply details about your current underground coal experience	\$747.60			Public Holiday																							Public Holiday	EMD .													
Underground Coal (add on) REFRESHER 1/2 day RIERR203E only You must have current Surf Std11 & at booking supply details about your current underground coal experience	\$413.10			Public Holiday																							Public Holiday	EMD .													
S123 Supervisor REFRESHER 2 days (first time) 6 Std11 RIIRIS301E/WHS301E/COM301E	\$617			Public Holiday									EMD MBH BRIS	EMD MBH BRIS												Public Holiday															
G2 Cert IV Risk REFRESHER 1 day (first time) 7 Std11 RIIRIS402E You must supply your CURRENT S123	\$445			Public Holiday										MBH BRIS							EMD .	MBH .				Public Holiday															
S123 Supervisor REFRESHER 3/4 day 6 Std11 RIIRIS301E/WHS301E/COM301E You must supply your previous S123 or equiv	\$359			Public Holiday										MBH .												Public Holiday	EMD .	BRIS .													
G2 Cert IV Risk REFRESHER 1/2 day 7 Std11 RIIRIS402E You must supply your previous G2 or equiv	\$264			Public Holiday										MBH .												Public Holiday	EMD .	BRIS .													
10618NAT Course in Firearms Safety (QLD) 1 day either CAT AB or CAT H To book - return the eligibility form & \$50 deposit	either \$144 or \$166			Public Holiday																						Public Holiday															
10618NAT Course in Firearms Safety (QLD) 1 day for CAT C only To book - return the eligibility form & \$100 deposit	\$265			Public Holiday																						Public Holiday															
<b>Venue Codes:</b> EMD = EMERALD / MBH = MORANBAH / BNE = BRISBANE		1	2	3	4	5	6	7	8	9	10	11	12	13	14	15	16	17	18	19	20	21	22	23	24	25	26	27	28	29	30	31									

February		Tu	W	Th	F	Sa	Su	M	Tu	W	Th	F	Sa	Su	M	Tu	W	Th	F	Sa	Su	M	Tu	W	Th	F	Sa	Su	M
<b>Venue Codes:</b> EMD = EMERALD / MBH = MORANBAH / BNE = BRISBANE		1	2	3	4	5	6	7	8	9	10	11	12	13	14	15	16	17	18	19	20	21	22	23	24	25	26	27	28
Surface Coal to meet Std11 2 days 6 Std11 This is for first timers	\$753		EMD .	EMD .					BRIS .	EMD .	EMD .					EMD .	EMD .					MBH .	MBH .	EMD .	EMD .				
Surface & Underground Coal to meet Std11 3 days 7 Std11 This is for first timers	\$1,218.50		EMD .	EMD .	EMD .				BRIS .	EMD .	EMD .	EMD .				EMD .	EMD .	EMD .					EMD .	EMD .	EMD .				
Underground Coal (add on) 1 day RIERR203E only You must have current SoA for Surface Std11	\$475.50				EMD .						EMD .								EMD .							EMD .			
Surface Coal to meet Std11 REFRESHER 1/2 day 6 Std11 At booking, supply details of current experience	\$344.50		EMD .						BRIS .		EMD .				MBH BRIS				EMD .				EMD .						
Surface & UG Coal to meet Std11 REFRESHER 1 day 7 Std11 At booking, supply details about your current underground coal experience	\$747.60		EMD .						BRIS .		EMD .				MBH BRIS				EMD .				EMD .						
Underground Coal (add on) REFRESHER 1/2 day RIERR203E only You must have current Surf Std11 & at booking supply details about your current underground coal experience	\$413.10		EMD .								EMD .								EMD .										
S123 Supervisor 2 days (first time) RIIRIS301E/WHS301E/COM301E	\$617	EMD BRIS	EMD BRIS					EMD .	EMD .						MBH BRIS	MBH BRIS							BRIS .	MBH BRIS	MBH .				
G2 Cert IV Risk 1 day (first time) RIIRIS402E You must supply your CURRENT S123	\$445			EMD BRIS						EMD .									MBH BRIS						BRIS .	MBH .			
S123 Supervisor REFRESHER 3/4 day RIIRIS301E/WHS301E/COM301E You must supply your previous S123 or equiv	\$359				EMD BRIS							MBH .							MBH .						BRIS .				
G2 Cert IV Risk REFRESHER 1/2 day RIIRIS402E You must supply your previous G2 or equiv	\$264				EMD .							MBH .							MBH .										
10618NAT Course in Firearms Safety (QLD) 1 day either CAT AB or CAT H To book - return the eligibility form & \$50 deposit	either \$144 or \$166												EMD .																
10618NAT Course in Firearms Safety (QLD) 1 day for CAT C only To book - return the eligibility form & \$100 deposit	\$265												n/a																
<b>Venue Codes:</b> EMD = EMERALD / MBH = MORANBAH / BNE = BRISBANE		1	2	3	4	5	6	7	8	9	10	11	12	13	14	15	16	17	18	19	20	21	22	23	24	25	26	27	28
		Tu	W	Th	F	Sa	Su	M	Tu	W	Th	F	Sa	Su	M	Tu	W	Th	F	Sa	Su	M	Tu	W	Th	F	Sa	Su	M

March		Tu	W	Th	F	Sa	Su	M	Tu	W	Th	F	Sa	Su	M	Tu	W	Th	F	Sa	Su	M	Tu	W	Th	F	Sa	Su	M	Tu	W	Th				
<b>Venue Codes:</b> EMD = EMERALD / MBH = MORANBAH / BNE = BRISBANE		1	2	3	4	5	6	7	8	9	10	11	12	13	14	15	16	17	18	19	20	21	22	23	24	25	26	27	28	29	30	31				
Surface Coal to meet Std11 2 days 6 Std11 This is for first timers	\$753		EMD	EMD					EMD	EMD					EMD	EMD						MBH	EMD	EMD					MBH	EMD	EMD					
Surface & Underground Coal to meet Std11 3 days 7 Std11 This is for first timers	\$1,218.50		EMD	EMD	EMD				EMD	EMD	EMD				EMD	EMD	EMD						EMD	EMD	EMD					EMD	EMD	EMD				
Underground Coal (add on) 1 day RIERR203E only You must have current SoA for Surface Std11	\$475.50				EMD						EMD							EMD							EMD							EMD				
Surface Coal to meet Std11 1/2 day REFRESHER 6 Std11 At booking, supply details of current experience	\$344.50	EMD						EMD			MBH						MBH	EMD				EMD														
Surface & UG Coal to meet Std11 1 day REFRESHER 7 Std11 At booking, supply details about your current underground coal experience	\$747.60	EMD						EMD			MBH						MBH	EMD				EMD														
Underground Coal (add on) 1/2 day REFRESHER RIERR203E only You must have current Surf Std11 & at booking supply details about your current underground coal experience	\$413.10	EMD						EMD										EMD				EMD														
S123 Supervisor 2 days (first time) RIIRIS301E/WH301E/COM301E	\$617		BRIS	BRIS				EMD	EMD						EMD	EMD							BRIS	MBH	MBH								BRIS	MBH	MBH	
G2 Cert IV Risk 1 day (first time) RIIRIS402E You must supply your CURRENT S123	\$445			BRIS						EMD							EMD																		BRIS	
S123 Supervisor 3/4 day REFRESHER RIIRIS301E/WH301E/COM301E You must supply your previous S123 or equiv	\$359				BRIS						EMD	MBH						EMD	MBH																	
G2 Cert IV Risk 1/2 day REFRESHER RIIRIS402E You must supply your previous G2 or equiv	\$264										EMD	MBH						EMD	MBH																	
10618NAT Course in Firearms Safety (QLD) 1 day either CAT AB or CAT H To book - return the eligibility form & \$50 deposit	either \$144 or \$166					EMD																														
10618NAT Course in Firearms Safety (QLD) 1 day for CAT C only To book - return the eligibility form & \$100 deposit	\$265					n/a																														Cat C EMD
<b>Venue Codes:</b> EMD = EMERALD / MBH = MORANBAH / BNE = BRISBANE		1	2	3	4	5	6	7	8	9	10	11	12	13	14	15	16	17	18	19	20	21	22	23	24	25	26	27	28	29	30	31				

**Price list** applies to programs eff 16th AUGUST 2021

**Note: Confirmations are generated upon return of the completed payment form**

**Programs to suit experienced mineworkers—note there are pre-requisites that apply:**

\$ 66.00 (2 hrs) Fire/Resus refresher of competency RIIERR302 & RIIERR205

\$276.00 (1/2 day) 2-year Heights refresher of competency RIIWHS204

\$276.00 (1/2 day) 2-year Confined space refresher of competency RIIWHS202

\$359.00 (3/4 day) 5-year Supervisor refresher of competencies RIICOM301; RIIRIS301 & RIIWHS301 (aka S123)

\$264.00 (3/4 day) 5-year Cert IV Risk refresher of competency RIIRIS402 (aka G2)

\$296.60 (application based) Recognition of Current Competency (RCC) for Std11 Surface units \* *conditions apply—refer to RCC brochure*

\$344.50 (1/2 day) QLD Coal Surface refresher, inc 5-year induction card

\$593.20 (3 hrs) Recognition of Current Competency (RCC) for Std11 Surface and Underground units \* *conditions apply—refer to RCC brochure*

\$747.60 (1-day) QLD Coal Surface and Underground refresher, inc 5-year induction card

\$296.60 (3 hrs) Recognition of Current Competency (RCC) for Std11 Underground unit \* *conditions apply—refer to RCC brochure*

\$413.10 (1/2 day) QLD Coal Underground refresher \* requires either previous SoA or suitable UG experience

**\$480 for 1-day refresher of both Heights & Con Space refresher**

**Programs to suit mineworkers that are either new to Industry or new to a role requiring additional competencies:**

\$ 368.00 (1 day) Work safely at Heights competency RIIWHS204

\$ 368.00 (1 day) Enter and work in Confined space competency RIIWHS202

\$ 617.00 (2-days) Supervisor competencies RIICOM301; RIIRIS301 & RIIWHS301 (aka S123)

\$ 445.00 (1-day) Cert IV Risk competency RIIRIS402 (aka G2) \* *pre-requisite of current S123 competencies to be provided*

\$ 753.00 (2-days) QLD Coal Surface, inc 5-year induction card \* *Any New Entrants from this program have additional tasks to complete within 3-12mths*

\$1,218.50 (3-days) QLD Coal Surface & Underground, inc 5-year induction card \* *Any New Entrants have additional tasks to complete within 3-12mths*

\$ 475.50 (1-day) QLD Coal Underground add on \* requires current Statement of Attainment of Std11 Surface

**\$695 for 2 consecutive bookings of both Heights & Con Space**

**Non-mining related programs \* *conditions apply—refer to respective Lennon Training Firearms booking kit***

\$ 144.00 (1 day) Course in Firearms Safety—either Cat AB or Cat H

\$ 166.00 (1 day) Course in Firearms Safety—both Cat AB and Cat H

\$ 265.00 (1 day) Course in Firearms Safety—Cat C (Restricted)

**Cat ABH Firearms safety courses also held in Moranbah**

# Payment form – Credit card/Purchase Order

## WHO IS THIS FOR?

Provide either your online booking reference:

\_\_\_\_\_

Or provide the name of student and course **date**

Student name: \_\_\_\_\_

Course date: \_\_\_\_\_

Please provide details as requested below  
and email to [admin@lennontraining.com](mailto:admin@lennontraining.com)

## CREDIT CARD DETAILS

Total fees authorised: \$ \_\_\_\_\_

Name on card: \_\_\_\_\_

Card Number:  
\_\_\_\_\_

Expiry (mm/yy): \_\_\_\_\_ CCV: \_\_\_\_\_

### Notes on this payment method:

1. EFTPOS are also accepted on day of enrolment
2. UnionPay International will incur 2.2% merchant fee.  
Credit cards **NOT** accepted: Amex, Diners, JCB

## PURCHASE ORDER DETAILS

Please provide details as requested below and  
email to [admin@lennontraining.com](mailto:admin@lennontraining.com)

Company name:  
\_\_\_\_\_

PO ref: \_\_\_\_\_

Name of person submitting this PO:  
\_\_\_\_\_

## PAYMENT INFO

To secure a spot, payment details must be confirmed using this payment form. Fees for training will be deducted on the day of enrolment. Payment can be made via cash, direct debit or credit card. **AMEX, Diners or JCB cards are NOT accepted so please don't write them down.**

To be approved for credit (Purchase Orders), your Company is to provide Trade references and pay according to the 7 day payment terms set by Lennon Training and not by your Company. Accounts not paid within the payment terms may incur penalty fees and further credit may be refused. Please contact Lexia on (07) 4982 0188 with your enquiry/request.

More information about our Fees and Charges policy, Refund policy and Application for refund can be found on our website [www.lennontraining.com/forms-and-policies](http://www.lennontraining.com/forms-and-policies)